



OFFERS OVER

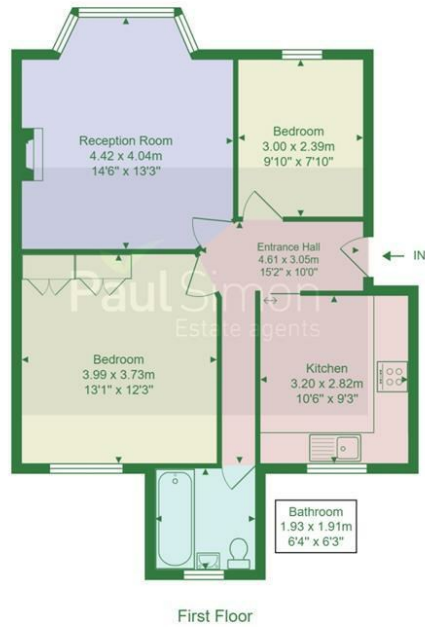
**£400,000**

**Green Lanes**

Winchmore Hill, N21 2RX

EPC RATING: COUNCIL TAX BAND: C

Green Lanes, N21



Approximate Gross Internal Area = 58.7 m<sup>2</sup> ... 632 ft<sup>2</sup>

This floor plan is produced in accordance with RICS Property Measurements Standards incorporating International Property Measurement Standards (IPMS2: Residential). The plan is for layout guidance only and not drawn to scale unless otherwise stated. Measurements and position of windows, door openings, rooms and any other items are approximate. Whilst all care is taken in the preparation of this plan, if any aspects of this plan are of specific importance, an independent inspection would be advised



Energy Efficiency Rating		Current	Potential
Very energy efficient - lower running costs			
(92 plus)	A		
(81-91)	B		
(69-80)	C		
(55-68)	D		
(39-54)	E		
(21-38)	F		
(1-20)	G		
Not energy efficient - higher running costs			
England & Wales		EU Directive 2002/91/EC	

Agents Note: Whilst every care has been taken to prepare these particulars, they are for guidance purposes only. All measurements are approximate and are for general guidance purposes only and whilst every care has been taken to ensure their accuracy, they should not be relied upon and potential buyers/tenants are advised to recheck the measurements

Paul Simon  
Estate agents

OFFICE ADDRESS  
786-788 Green Lanes  
London  
N21 3RE

OFFICE DETAILS  
0208 800 1155  
management@paul-simon.co.uk